

DESCRIPTION

Solenoid valve 2 way normally closed
direct acting poppet type

CONSTRUCTION

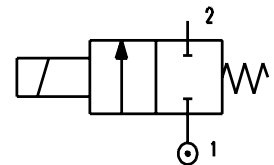
Body	Brass
Armature tube	Brass
Plunger and core	AISI 430FR
Springs	AISI 302
Seal material	NBR - FPM



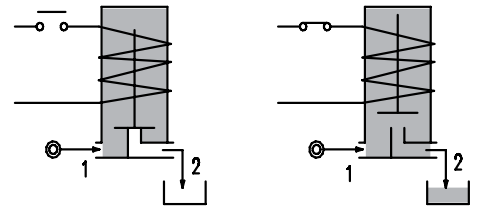
2

FEATURES

Maximum allowable pressure PS 30bar^③
 Maximum fluid viscosity 25cSt (mm²/s)
 Ambient temperature: from -10°C to +55°C
 Universal mounting position



OPTIONS: Electroless nickel plating



CODE ① ②	Connection	Orifice mm	Kv m ³ /h	Differential pressure bar			Nominal power			Coil		Seal ①	Temp. range °C
				Min	Max		AC Inrush	VA Holding	DC Watt	Series	Width		
D121L...10///...	M5	1	0.03	0	-	10	-	-	2	6	16	NBR=B	-10 +90
D121L...12///...		1.2	0.037	0	-	7	-	-	2				
D121L...12///...		1.2	0.037	0	-	12	-	-	4				
D121L...16///...		1.6	0.055	0	-	3	-	-	2				
D121L...16///...		1.6	0.055	0	-	8	-	-	4				
D121L...20///...		2	0.082	0	-	1.4	-	-	2				
D121L...20///...		2	0.082	0	-	4	-	-	4				
												FPM=V	-10 +140

① Seal Example: D121LB12///60112 NBR seal
 ② Coil Coil 24V DC 2W

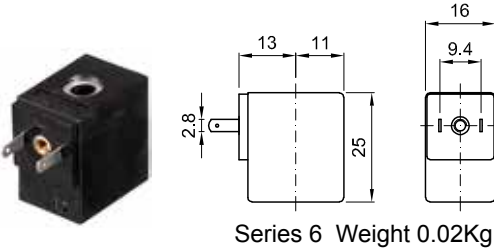
③ The maximum allowable pressure PS for steam is 2.5bar (gauge pressure)

COILS ③	Direct Current				Electrical connection	Connectors
	12V		24V			
	2W	4W	2W	4W		
Series 6 Width 16	60012	60014	60112	60114	AMP 2.8x0.5	PG7 code 10348040

DESCRIPTION
 Class F insulation
 Voltage tolerance $\pm 5\%$
 Protection class
 IP65 with connector fitted
 IP00 without connector
 Continuous service ED100%

OPTIONS
 Cable attached
 Special coil voltage
 Special coil powers

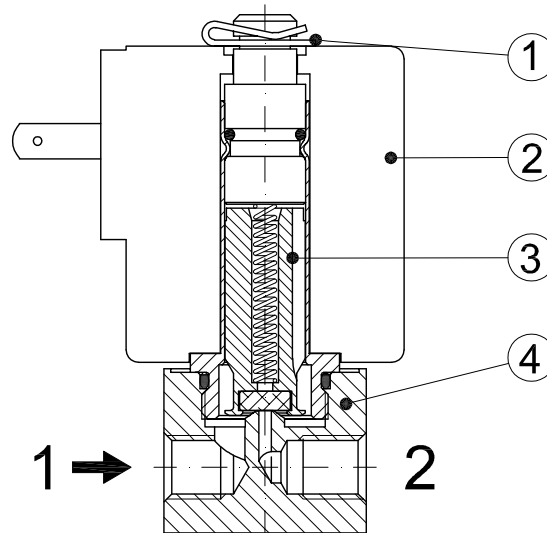
(for coil details see section 8)



Series 6 Weight 0.02Kg

SPARE PARTS LIST

1. Coil fixing nut
2. Coil
3. Plunger
4. Armature tube assembly



OVERALL DIMENSION

