

## DESCRIPTION

Solenoid valve 2 way normally closed  
with servo-assisted piston for use with steam

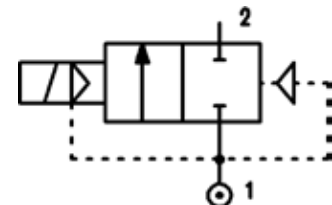
## CONSTRUCTION

Body and cover	Brass
Armature tube	Stainless steel
Plunger and core	Stainless steel
Springs	Stainless steel
Piston	Stainless steel
Piston seal	PTFE reinforced
Seal material	PTFE

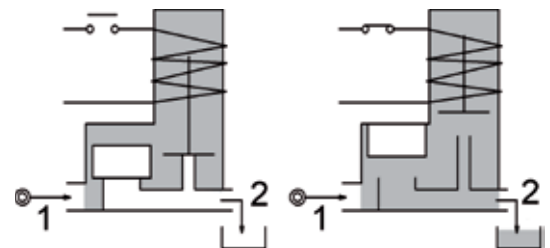


## FEATURES

Minimum differential pressure 2,5bar  
Ambient temperature with class H coil only -10°C +80°C  
Preferred mounting position with vertical coil above



**OPTIONS:** Electroless nickel plating  
c  us certified coils



CODE ②	Connection G ISO 228	Orifice mm	Kv m³/h	Differential pressure bar			Nominal power			Coil		Seal	Temp. range °C
				Min	Max		AC Inrush	VA Holding	DC Watt	Series	Width		
					AC	DC							
E119CW12/1/...	3/8"	12	2	2.5	10	10	20	15	10	2	30	PTFE	-10 +180
E119DW12/1/...	1/2"	12	2.2	2.5	10	10							

② Coil

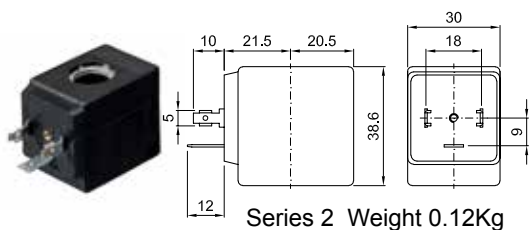
Example: E119DW12/1/221 PTFE seal  
Coil 24V DC

Maximum allowable leakage <0.2NI/h

COILS	Alternating Current 50/60Hz Volt							Direct Current Volt			Electrical connection	Connectors
	12	24	48	110	220 230	240	380	12	24	48		
Series 2 Width 30 Code ②	22A	22B	22C	22D	22E	22F	22G	220	221	222	DIN 43650A	PG9 code 10349000

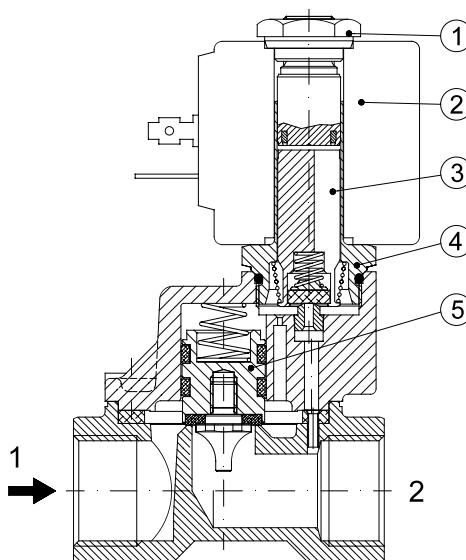
**DESCRIPTION**  
 Insulation class H  
 Voltage tolerance  
 AC +15% -10%  
 DC ± 10%  
 Protection class  
 IP65 with connector fitted  
 IP00 without connector  
 Continuous service ED100%

**OPTIONS**  
 Cable attached  
 Special coil voltage  
 Special coil powers

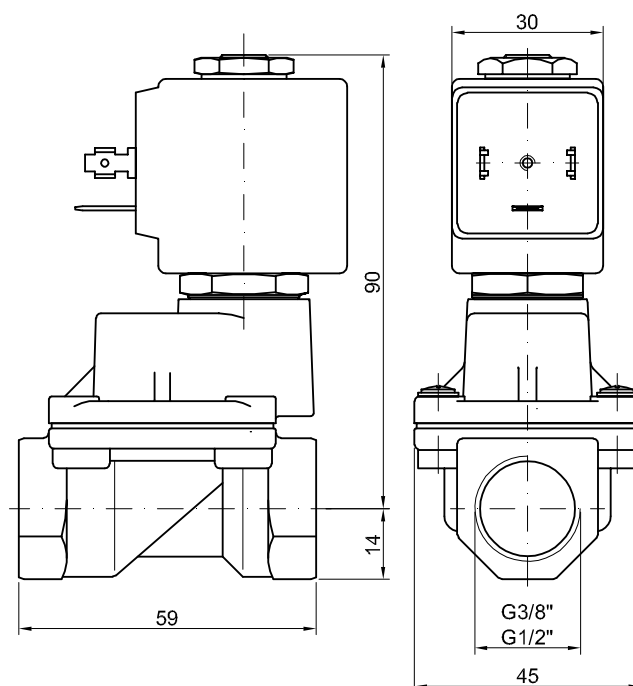


### SPARE PARTS LIST

1. Coil fixing nut
2. Coil
3. Plunger
4. Armature tube with core
5. Piston assembly



### OVERALL DIMENSION



Weight=0.63Kg